



# MULTIFUNCTION VALVE

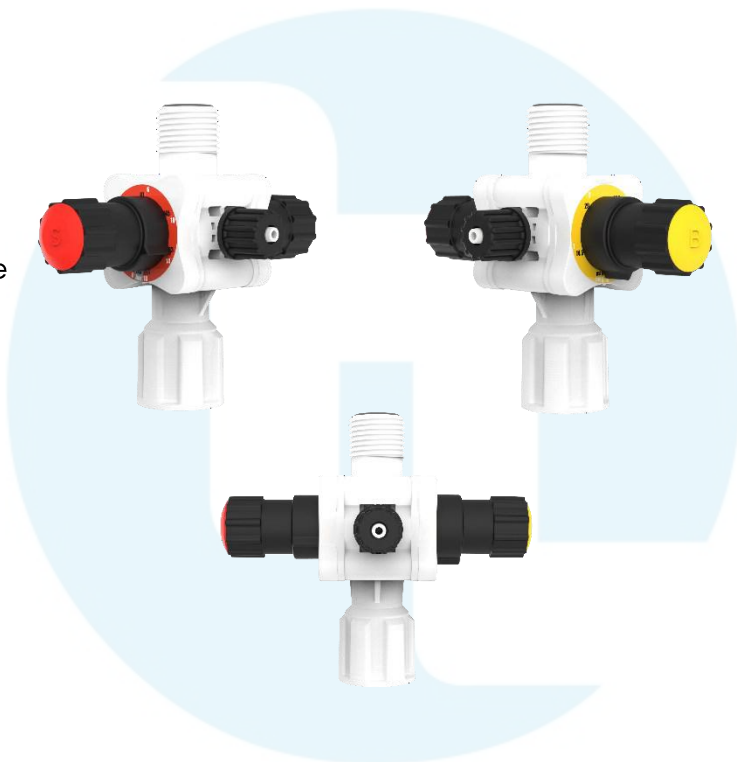
## Solenoid dosing pump

### DESCRIPTION

Compact device for chemical dosing systems, combining in a single body the functions of check valve, air vent, and pressure regulation. It optimizes space and simplifies installation.

The valve has a dual function:

- **BACK PRESSURE:** Prevents pipe siphoning by maintaining constant upstream pressure.
- **OVERFLOW:** Avoid damage to the pump in the event of pressure increases exceeding the calibration pressure.



### TECHNICAL FEATURES

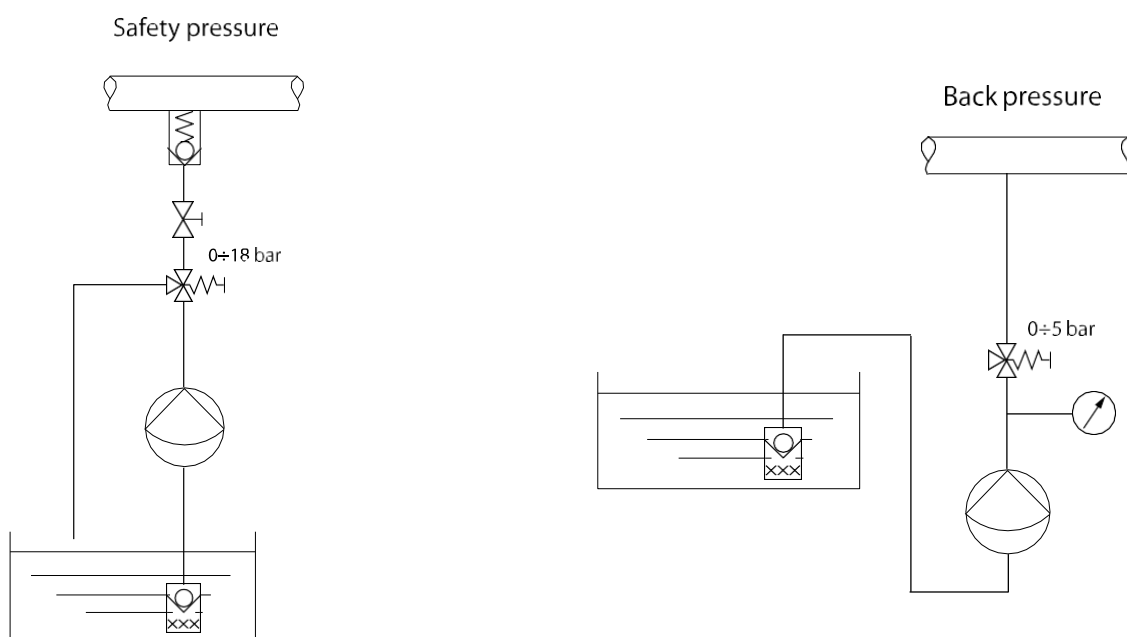
- **Connections:** Installation on the discharge line.
- **Positioning:** free orientation before tightening.
- **Contact Materials:**  
Valve body: in PVDF and FPM or EPDM seals.  
Note: It is always recommended to check chemical compatibility with the product being dosed.
- **Diaphragms:** PTFE (Teflon®).
- **Operating parameters:**  
Safety pressure: 0–18 bar.  
Operating pressure: 0–5 bar (adjustable).



## INSTALLATION & ASSEMBLY

1. Mount the valve directly on the delivery pipe.
2. Position it correctly, then tighten the locking nut.
3. Connect the delivery pipe to the valve and the drain pipe to the product tank, keeping it above the maximum liquid level at all times.
4. Check for leaks, test with minimum flow.

## FUNCTIONAL DIAGRAM OF THE SYSTEM



## CODES

Code	Body	Diaphragm	Seals	Pipe connections Ø	Safety pressure	Adjustable drain valve
AVA0008201	PVDF	PTFE	FPM	Ø 4x6 - Ø 8x12 <b>with wall mounting bracket</b>	0-18 bar	0-5 bar
AVA0008202	PVDF	PTFE	EPDM	Ø 4x6 - Ø 8x12 <b>with wall mounting bracket</b>	0-18 bar	0-5 bar

## MULTIFUNCTION VALVE - ELECTROMAGNETIC DOSING PUMPS

The information within this document may be subject to change without prior notice.

**Etatron GB Ltd**

Etatron GB Ltd, Newlin Business Park, Exchange Road, Lincoln LN6 3AB

Phone: +44 (0)1522 852397

e-mail: sales@etatron.co.uk – web: www.etatron.co.uk