

DLX (Wall Mount) & DLXB (Foot Mount) Solenoid Dosing Pumps

TECHNICAL FEATURES

- *Flow Rate:* From 1 to 20 L/H (15 L/H with PVDF head)
- *Maximum Pressure:* 20 Bar
- *Power Supply:* 230v standard; 120v, 12vdc, 24vac, 24vdc
- *Stroke Rate:* 120 impulses/minute maximum (150 impulses/minute for 20 L/H 3 Bar model)
- *Pump Head:* PP or PVDF with lip or ceramic ball valves; Auto-bleed options available
- *Diaphragm:* PTFE
- *Mounting options:* Wall mounted as standard; DLXB foot mounted option
- *Stroke length adjustment:* Available on DLXB foot mounted options
- *Installation Kit:* PP or PVDF Injection Valve, Foot Filter, 2m each of suction/discharge tubing, screws & plugs for wall mounting



Foot Mount

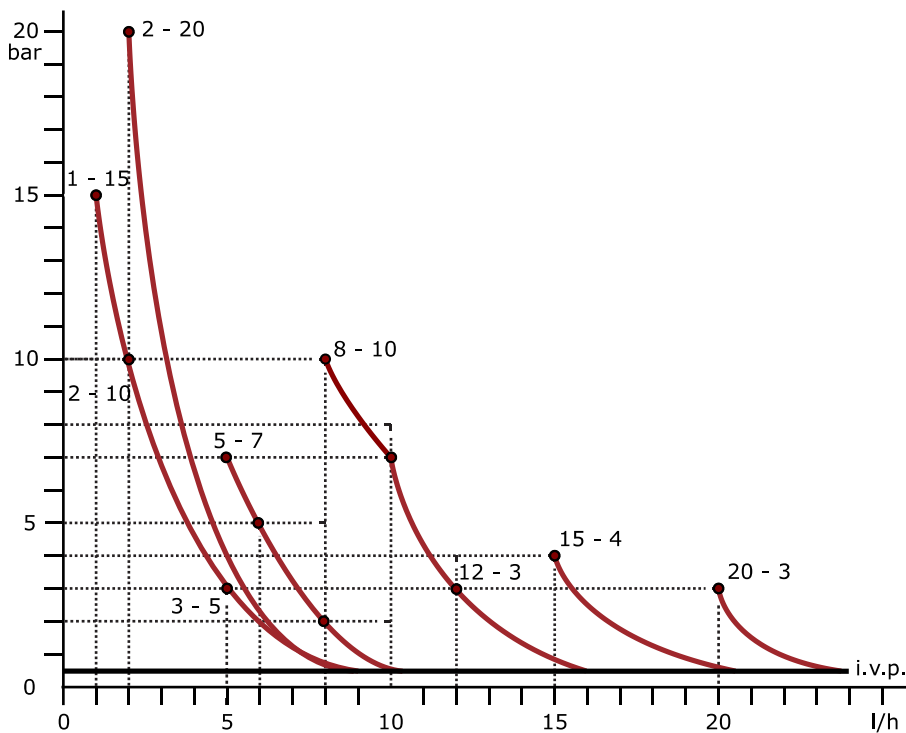
DLX MODELS

MA/AD	Analogue manual dosing with dual scale adjustment (0 – 100% & 0 – 20%); Optional level alarm
MA/MB	Digital manual control (0 – 100%); Level alarm
VFT/MBB	Proportional dosing control with pulse multiplier (1xN), pulse multiplier with memory (1xN- M) and pulse divider (1/N); Digital manual dosing; Level alarm
MF/M	Digital manual control (0 – 100%); Proportional dosing control with pulse multiplier (1xN), pulse multiplier with memory (1xN- M) and pulse divider (1/N); 4-20 mA proportional control; Level alarm; Timer; Alarm output relay
pH-Rx-Cl/M	Integral pH, Redox and Chlorine (PPM) control; 0 – 14 pH measuring range; - 1000 - +1400 mV Redox measuring range; 0 – 2, 0 – 20 or 0 – 200 PPM measuring range; 4-20 mA output; alarm relay output; Level alarm
pH-Rx/MBB	Integral pH and Redox control; 0 to 14 pH measuring range; - 1000 to +1400 mV Redox measuring range; digital manual control; Level alarm

DLX (Wall Mount) & DLXB (Foot Mount) Solenoid Dosing Pumps

PUMP TECHNICAL DETAILS **The figures below are based on dosing water at 20°C*

Model	Flow rate (L/H)	Max pressure (Bar)	Injection volume (cc)	Max injection frequency (imp/minute)	Tubing (IDxOD mm)	Power supply
01-15	1	15	0.14	120	4x6	230v, 50-60 Hz
	2	10	0.28			
	3	5	0.42			
02-20	2	20	0.28	120	4x6	230v, 50-60 Hz
05-07	5	7	0.69	120	4x6	230v, 50-60 Hz
	6	5	0.84			
	8	2	1.11			
08-10	8	10	1.11	120	4x6	230v, 50-60 Hz
	10	7	1.39			
	12	3	1.67			
15-04	15	4	2.08	120	4x6	230v, 50-60 Hz
20-03	20	3	2.6	120	4x6	230v, 50-60 Hz



Wall Mount

The information within this document may be subject to change without prior notice

Doc #: **225T01 - 20.0** 2 (2) 18/01/2017

Etatron GB Ltd
 Etatron GB Ltd, Newlin Business Park, Exchange Road, Lincoln LN6 3AB
 Phone: +44 (0)1522 852397
 e-mail: sales@etatron.co.uk – web: www.etatron.co.uk