

# BT Solenoid Dosing Pumps

## TECHNICAL FEATURES

- *Flow Rate:* From 1 to 80 L/H
- *Maximum Pressure:* 20 Bar
- *Power Supply:* 230v standard; 120v
- *Stroke Rate:*
  - 160 impulses/minute maximum (5-20 L/H models only)
  - 180 impulses/minute maximum (30-80 L/H models only)
- *Pump Head:*
  - PP or PVDF with lip or ceramic ball valves; Auto-bleed options available; PVC with ceramic ball valves for 50-80 L/H
- *Diaphragm:* PTFE
- *Installation Kit:*
  - PP or PVDF Injection Valve, Foot Filter, 2m each of suction/discharge tubing, screws & plugs for wall mounting



## BT MODELS

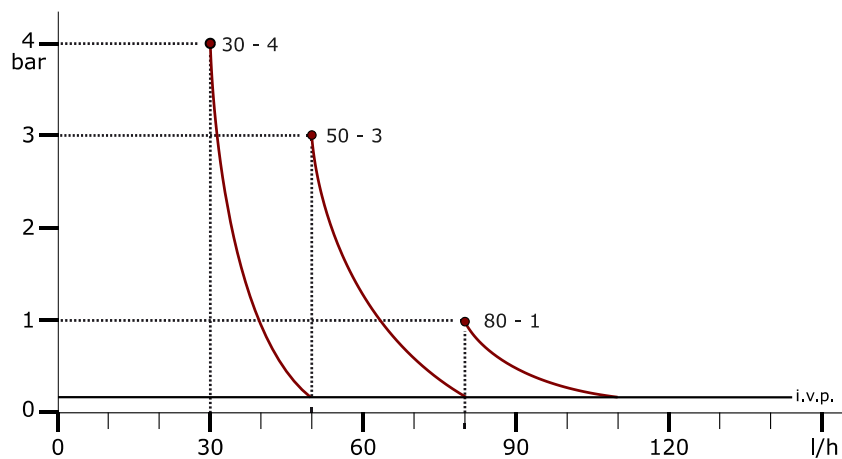
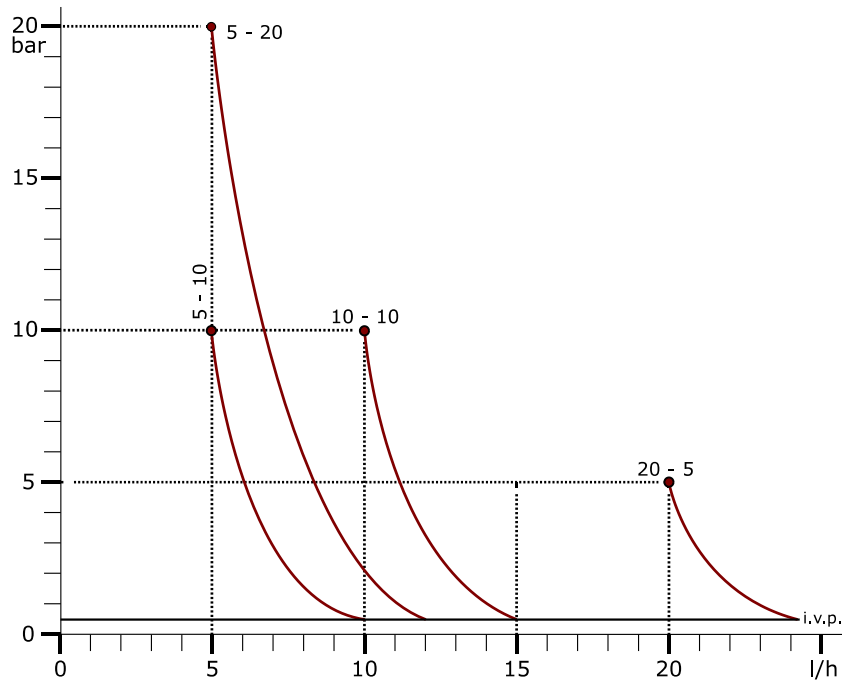
MA/AD	Analogue manual dosing with dual scale adjustment (0 – 100% & 0 – 20%); Optional level alarm
MA/M	Digital manual control (0 – 100%); Level alarm
VFT	Proportional dosing control with pulse multiplier (1xN), pulse multiplier with memory (1xN- M) and pulse divider (1/N); Digital manual dosing; Level alarm
MF	Digital manual control (0 – 100%); Proportional dosing control with pulse multiplier (1xN), pulse multiplier with memory (1xN- M) and pulse divider (1/N); 4-20 mA proportional control; Level alarm; Timer; Alarm output relay
pH-Rx-Cl/M	Integral pH, Redox and Chlorine (PPM) control; 0 – 14 pH measuring range; - 1000 - +1400 mV Redox measuring range; 0 – 2, 0 – 20 or 0 – 200 PPM measuring range; 4-20 mA output; alarm relay output; Level alarm

# BT Solenoid Dosing Pumps

## PUMP TECHNICAL DETAILS *\*The figures below are based on dosing water at 20°C*

Model	Flow rate (L/H)	Max pressure (Bar)	Injection volume (ml)	Max injection frequency (imp/minute)	Tubing (IDxOD mm)	Power supply
05-10	5	10	0.52	160	4x6	230v, 50-60 Hz
05-20	5	20	0.52	160	4x6	230v, 50-60 Hz
10-10	10	10	1.04	160	4x6	230v, 50-60 Hz
20-05	20	5	2.08	160	4x6	230v, 50-60 Hz
30-04	30	4	2.8	180	10x14	230v, 50-60 Hz
50-03	50	3	4.6	180	10x14	230v, 50-60 Hz
80-01	80	1	7.4	180	10x14	230v, 50-60 Hz

## FLOW RATE/PRESSURE CHARTS



The information within this document may be subject to change without prior notice

Doc #: **225T01 - 20.0** 2 (2) 18/03/2015

**Etatron GB Ltd**  
 Etatron GB Ltd, Newlin Business Park, Exchange Road, Lincoln LN6 3AB  
 Phone: +44 (0)1522 852397  
 e-mail: sales@etatron.co.uk – web: www.etatron.co.uk